



# The Sky for the Cloud™: CyrusOne Data Centers

Fred Holloway  
Vice President, Partner Ecosystem  
CyrusOne, LLC



# What Happens in an Internet Minute?



## And Future Growth is Staggering

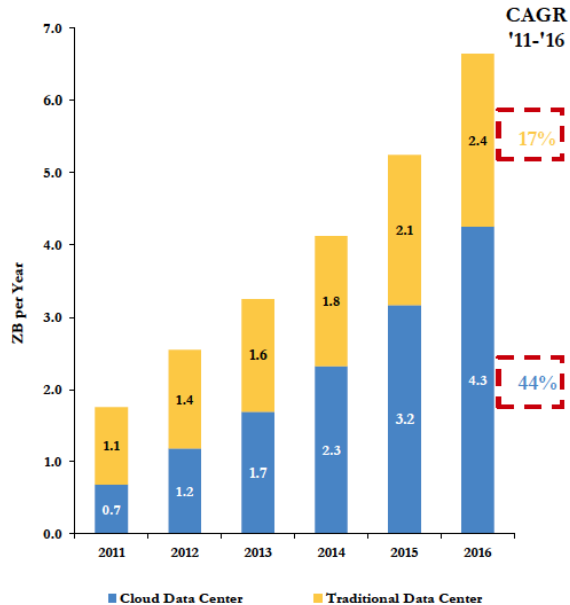


# Mobile Growth

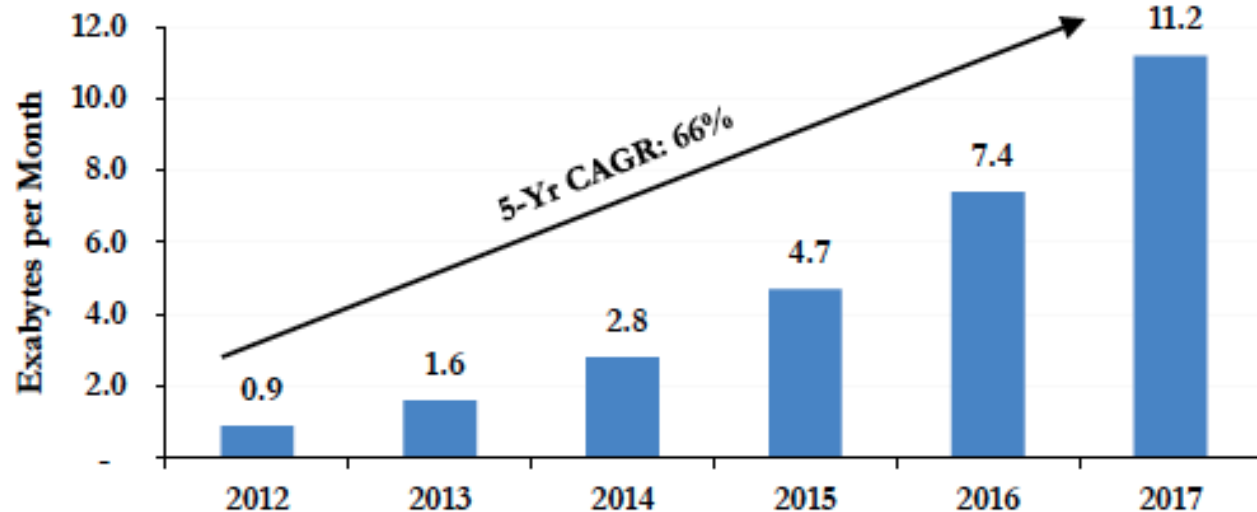
How big is a zettabyte? 1.9 ZB is equal to every person on earth receiving 174 newspapers every day for a year.

By 2016 global data center traffic will equal 6.7 ZB! Mobile access is key to this!

Global Data Center Traffic by Data Center (2012)



Mobile Data Traffic Estimated to Grow at 66% CAGR



## What are the analysts predicting?

- \$20 billion out of \$80 billion (25%) of total annual US Gov IT budget is being dedicated to cloud systems
- Despite reduced IT spending, cloud computing spending will grow because it represents savings
- Federal private cloud services spending will reach \$1.7 billion in FY 2014
- IDC forecasts that this market will reach \$7.7 billion by FY 2017
- In government, Infrastructure-as-a-Service (IaaS) is growing fastest
- Between now and 2017, IaaS will grow to \$5.4 billion
- SaaS will grow to \$2.4 billion, and PaaS will grow to \$1.1 billion

*Provided by the Distributed Computing Industry Association (DCIA), 2014*

# Who is CyrusOne?

Preferred data center provider to the global Fortune 1000



## A Global Leader

- 26 high performance data centers worldwide
- Servicing 9 of top 20 global Fortune companies and over 130 of the Fortune 1000

## Proven Financial Stability

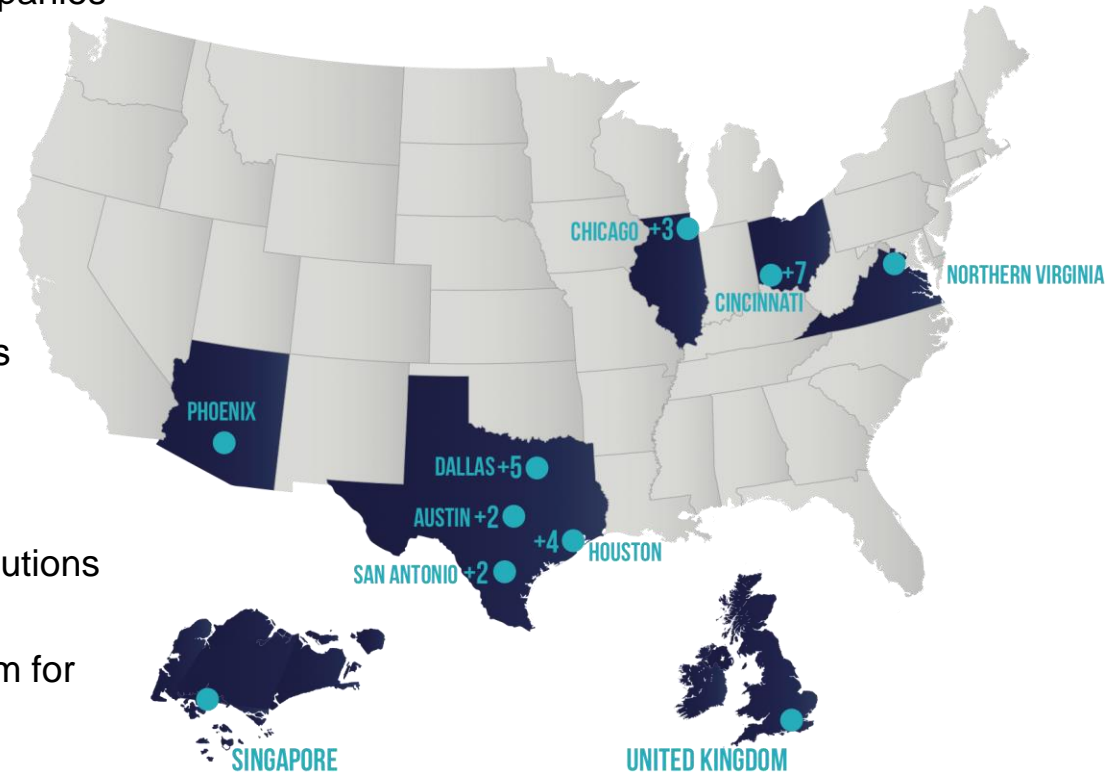
- Trading on the NASDAQ (CONE)

## World Class Facilities and Reliability

- Top-tier data centers offering 100% SLA's
- Lowest customer churn of industry

## Exclusive Focus on Colocation

- Unique and Customized Data Center Solutions
- Focus on space, power and cooling
- Leverages world class Partner Ecosystem for different Managed Services



# We enable seamless interconnectivity

## CyrusOne National IX (Internet Exchange)

### National IX

- Connect across CyrusOne facilities and telecom carrier hotels in Dallas, Houston, Austin, San Antonio, and Phoenix, Chicago, Ohio by 3Q14, Virginia by Q414
- Enable national interconnection or connections within city specific sites
- City-to-city connections are delivered thru high speed wholesale connections using either MPLS or Optical Waves
- Goal to be within 5ms of Fortune 1000

### Benefits

- Reduce transport costs and improve reliability
- Enjoy top-tier speed and performance
- Enables multi-site deployments
- Access to all relevant carrier hotels
- Realize nearly infinite scalability



# Top-Tier Data Centers PLUS Exceptional, Low-Cost Metro Connectivity

*Allows clients to Architect their Ideal Data Center Solution*

## What Drives An Active-Active Data Center Design?

- Required by DR and business continuity standards
- Avoids a single, concentrated data depository
- High availability of applications and data access
- Load balancing together with performance scalability
- Better response and optimal content routing: proximity to clients

## DATA CENTER OPTIONS



### Single consolidated data center

- With all of the eggs in one basket, harden the basket



### Two data centers

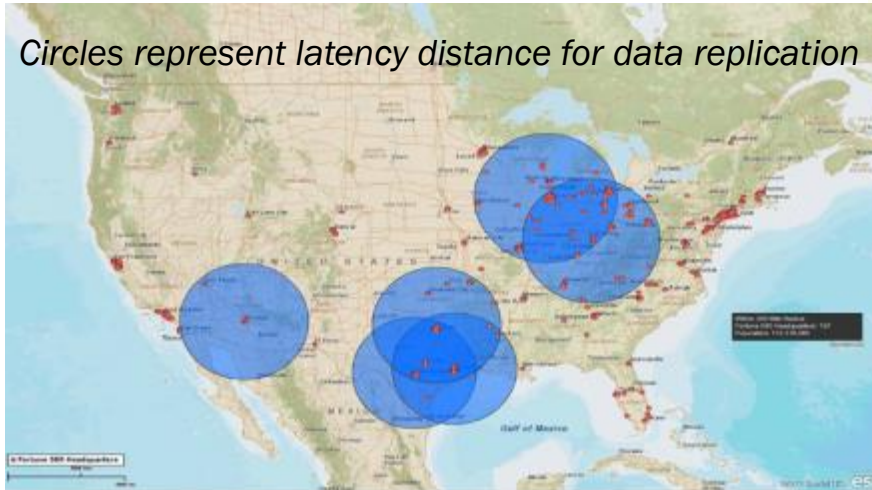
- Active-Passive
- Active-Active



### Three or more data centers

- Active-Active-Passive
- Active-Active-Active

*Circles represent latency distance for data replication*

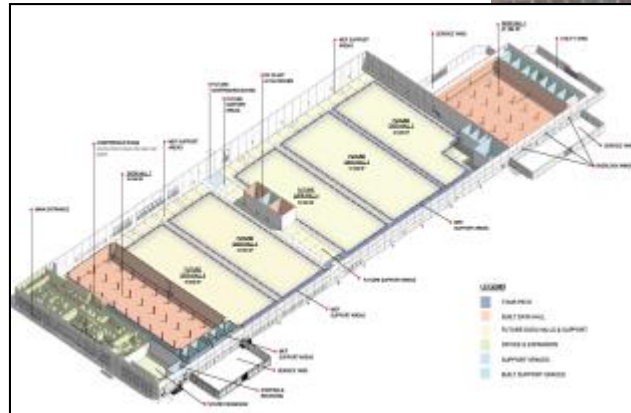


# We design to drive efficiencies

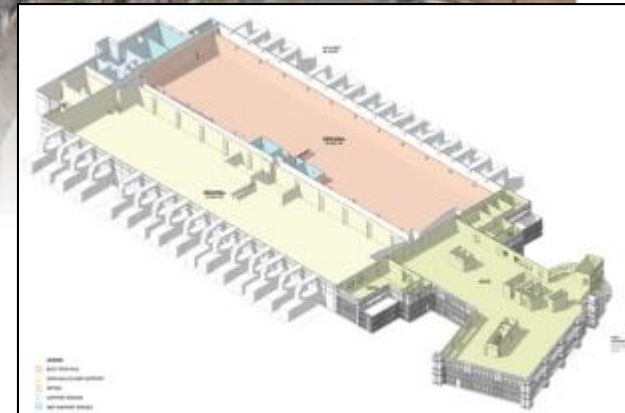
Massively Modular™ Engineering & Design

## A unique approach

- Time/effort/money is spent up front on common platforms - land, building shell, network, fire protection, security
- Electrical and mechanical subsystems are remanufactured offsite as needed
- Supply chain engineering to deliver electrical and mechanical subsystems onsite just-in-time
- Delivery of data halls in as little as 14 weeks



Carrollton Data Center

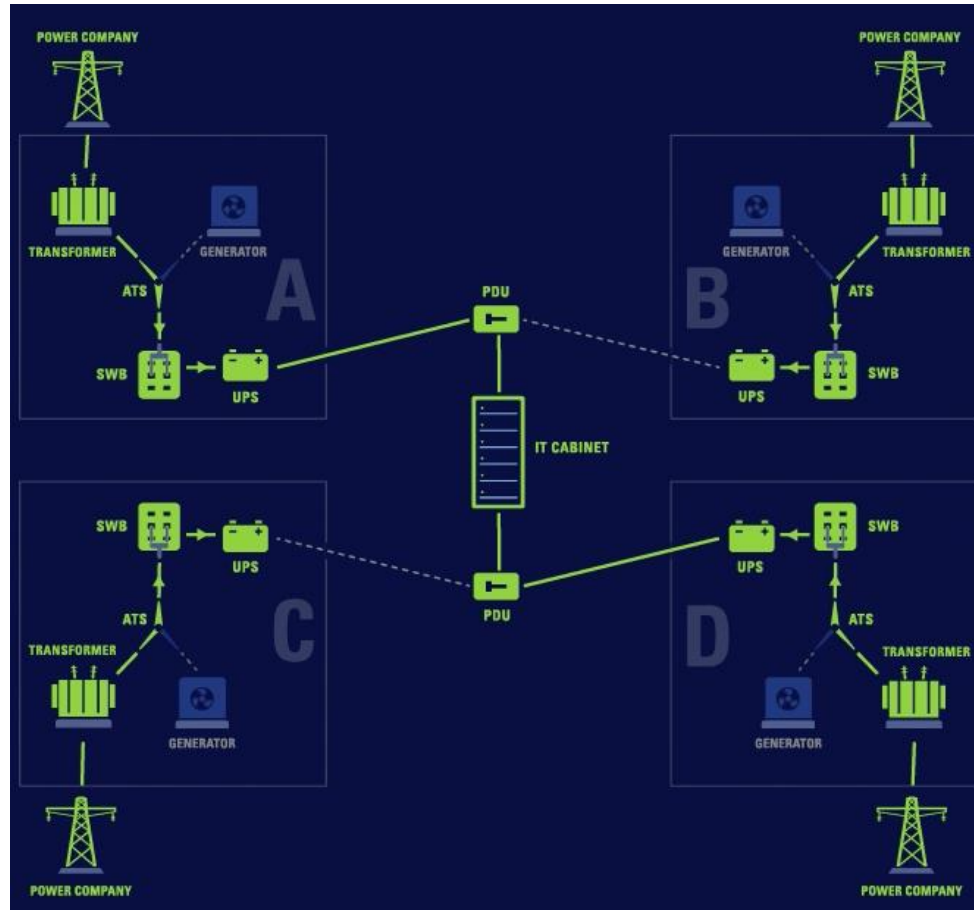


Phoenix Data Center



# Distributed Redundant Power Architecture

A Four-legged power distribution system



# We ensure multi-level security

Controlled and monitored entry into your environment

## Standard State-of-the-Art Security Features

- Biometric and key card access required to data halls
- Cameras inside and outside facilities
- No customer access to critical infrastructure
- Perimeter fencing and private entrances
- Colored coded badges
- Anti-pass backdoors to prevent tail-gating
- Onsite security 24x7

## Scaled to fit your needs

- Private entries (available)
- Laser grid
- Restricted access
- Slab to deck cages
- Steel mesh wall lining
- Steel conduit for cross-connects
- Pressure sensitive flooring



**Customized Security Available**

# CyrusOne Sterling Data Center

Planned Completion date – October, 2014



# Thank You

Built for Tomorrow. Ready Today.

